

USE CASE ELEVATED TEMPERATURE DETECTION

Safe Utilities

Operational View



DETECT

ELEVATED TEMPERATURE DETECTION

A thermal camera at a service centre checkpoint detects a field worker exhibiting indications of elevated body temperature and alerts security operations.



ANALYZE

TEMPERATURE ALERT VERIFIED

The security operations centre acknowledges the alert and identifies the employee exhibiting indications of elevated body temperature.



COMMUNICATE

RESOURCES DISPATCHED

Agents at the security checkpoint are notified of the employee and a medical professional is dispatched to the checkpoint.



RESPOND

SITUATION RESOLVED

The employee is discreetly isolated, a medical screening is conducted and an incident logged with relevant data.

Technology View



DETECT

- Avigilon Video Security Cameras
- Avigilon Control Center
- Elevated Temperature Detection



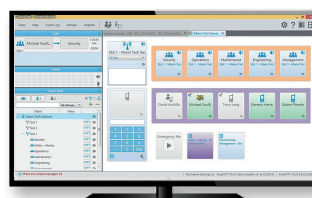
ANALYZE

- Avigilon Video Security Cameras
- Avigilon Control Center



COMMUNICATE

- Radio Communications: Voice and Multimedia
- WAVE PTX: Broadband Push-to-Talk and Multimedia Sharing
- Dispatch Software



RESPOND

- Control Room Solutions

Motorola Solutions Ltd. Nova South, 160 Victoria Street, London, SW1E 5LB, United Kingdom.

Availability is subject to individual country law and regulations. All specifications shown are typical unless otherwise stated and are subject to change without notice. Camera footage is for illustrative purposes only.

MOTOROLA, MOTO, MOTOROLA SOLUTIONS and the Stylized M Logo are trademarks or registered trademarks of Motorola Trademark Holdings, LLC and are used under license. All other trademarks are the property of their respective owners. ©2021 Motorola Solutions, Inc. All rights reserved. EMEA (04-21)