

USE CASE FIELD WORKER SAFETY

Safe Utilities

Operational View



DETECT

ALERT OF ESCALATING CUSTOMER INTERACTION

A field worker's customer service call becomes confrontational so the worker presses the emergency button on their radio to alert the control room. The customer calms down as they notice the worker is wearing a body-worn camera.



ANALYZE

REAL-TIME VIDEO VERIFICATION

Control room operator determines the location of the distress signal/worker, via the radio's built-in GPS, and views live video stream from their body-worn camera.



COMMUNICATE

FIELD COMMUNICATION

Control room operator sees the situation is under control but verifies that the worker is now safe over their radio.



RESPOND

INCIDENT DOCUMENTATION

An incident is logged with relevant data for analysis and claims.

Technology View



DETECT

- Radio Communications: Man Down
- Alert/Emergency Button
- Body-Worn Cameras



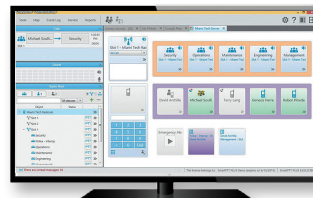
ANALYZE

- Control Room Solutions
- Location Monitoring
- Body-Worn Cameras



COMMUNICATE

- Radio Communications: Voice and Multimedia
- WAVE PTX: Broadband Push-to-Talk and Multimedia Sharing
- Dispatch Software



RESPOND

- Control Room Solutions

Motorola Solutions Ltd. Nova South, 160 Victoria Street, London, SW1E 5LB, United Kingdom.

Availability is subject to individual country law and regulations. All specifications shown are typical unless otherwise stated and are subject to change without notice. Camera footage is for illustrative purposes only.

MOTOROLA, MOTO, MOTOROLA SOLUTIONS and the Stylized M Logo are trademarks or registered trademarks of Motorola Trademark Holdings, LLC and are used under license. All other trademarks are the property of their respective owners. ©2021 Motorola Solutions, Inc. All rights reserved. EMEA (04-21)